



Research Article

Machine Learning through FMTVDM Proprietary QCA Equations

Richard M Fleming^{1*}, Matthew R Fleming¹, Tapan K Chaudhuri²
and Andrew McKusick^{1,3}

¹The Camelot Foundation, FHHI-Omnific Imaging-Camelot, California, USA

²Department of Radiology, East Virginia Medical School, Virginia, USA

³Department of Pharmacy, Sebec Consulting & Media, South Carolina, USA

Abstract

Human interpretive errors using qualitative imaging is associated with sensitivity and specificity problems. The introduction of quantitative methods, including proprietary equations from Quantitative Coronary Arteriography (QCA) and "The Fleming Method for Tissue and Vascular Differentiation and Metabolism" (FMTVDM) eliminates these errors and replaces human interpretation with accurate, consistent and reproducible measurements, placing patients on a "Health-Spectrum" which can be used for diagnostic and treatment purposes.

The primary author's previous works on phantom studies have demonstrated an accuracy of ± 0.1 millimeter for quantitative coronary arteriography. This study investigated the clinical results of 1001 stenotic lesions to determine the variability of stenosis flow reserve and percent diameter stenosis using proprietary equations derived from that work. Stenosis flow reserve is a useful clinical measurement with Stenosis Flow Reserve (SFR) ranging from 4 to 5 for lesions with less than 40 percent diameter stenosis (% DS). The mean stenosis flow reserve can be predicted on the basis of % DS alone ($R = 0.98$). Using proprietary equations, % DS can be derived despite lesion eccentricity and angulation of entry to and from the narrowing, with ranges from 0.1 to 0.4 millimeters (one standard deviation) depending upon the severity of the lesion in question.

This QCA work once coupled with FMTVDM, allows machine measurements, which define the extent of Coronary Artery Disease

***Corresponding author:** Richard M Fleming, The Camelot Foundation, FHHI-Omnific Imaging-Camelot, California, USA, Tel: +1 818 210 6930; E-mail: DrRichardMFleming@gmail.com

Citation: Fleming RM, Fleming MR, Chaudhuri TK, McKusick A (2019) Machine Learning through FMTVDM Proprietary QCA Equations. J Angiol Vasc Surg 4: 026.

Received: July 18, 2019; **Accepted:** August 05, 2019; **Published:** August 12, 2019

Copyright: © 2019 Fleming RM, et al. This is an open-access article distributed under the terms of the Creative Commons Attribution License, which permits unrestricted use, distribution, and reproduction in any medium, provided the original author and source are credited.

(CAD) without error. The integration of these two systems together produced the first truly Artificial Intelligence (AI) system capable of learning from itself, independent of human error.

Keywords: AI; CAD; CFR; FMTVDM; QCA; Quantification; SFR

Introduction

The currently used definition of Artificial Intelligence (AI) or Machine Learning (ML) is excessively fluid indicating that few people truly have a solid definition of what is being talked about. While many people have been assembling lists of qualitative tests (yes/no), from which the probability of being correct about the presence or absence of disease, to form their AI, the reality is this is nothing more than a collection of flawed tests designed to answer yes you most likely have disease or no, you most likely don't have disease. This qualitative guesstimate is not AI.

Disease is not an all or none phenomena but rather a continuum [1,2] as genetic and environmental factors interact. Thus, to develop true AI requires the ability to accurately, consistently and reproducibly measure these transitional changes; not only for diagnostic purposes but also for assessment of treatment response.

Quantitative Coronary Arteriography (QCA) [3-6] provides an absolute measurement of the extent of coronary artery disease, defining Percent Diameter Stenosis (% DS) in two orthogonal views, Percent Area Stenosis (% AS), absolute length of lesion, entry and exit angles, density data and measured flow reserve. Flow reserve has been labeled both as Coronary Flow Reserve (CFR) and Stenosis Flow Reserve (SFR), which are the same value which merely differentiate for the uninitiated whether a coronary lumen narrowing exists or not.

The reliability and reproducibility of Automated QCA has been determined using phantoms and clinical studies, providing an accuracy of ± 0.1 millimeter [4-11]. Limitations in the value of visual qualitative interpretation of coronary arteriograms have been compared with automated quantitative coronary arteriography [4]. While it is possible to reduce, although not eliminate, the human error introduced into qualitative interpretation of coronary arteriograms [12], coronary artery disease itself is not merely a narrowing of a coronary artery but rather a limitation in the ability of the artery to maximally dilate when needed to enhance coronary blood flow; aka. reserve [13]. The limitations of qualitative evaluations of Coronary Artery Disease (CAD) have been well established [14-17].

Despite certain limitations that may affect QCA (distal lesions, inadequate contrast, poor image quality, overlapping vessels, vessel angulation), QCA has become a useful tool in detecting subtle changes in coronary atherosclerosis [3-11]. When used in conjunction with The Fleming Method for Tissue and Vascular Differentiation and Metabolism (FMTVDM), absolute quantification of the extent of CAD can be derived from FMTVDM through the use of proprietary equations, [18-24] which corrects the errors originally made in SFR-% DS using dog models [8,25].

Given the interest in the development of AI to improve both diagnostic evaluation and assessment of treatment responses, it is critical that we recognize that true AI is the development of a system, which is not qualitative and is not based upon probabilities but rather absolute quantitative measurements against which clinical decisions can be made.

The validation of FMTVDM has been well established elsewhere (patent # 9566037) in the medical literature, inter alia references [18-24]. To determine if true AI/ML can occur through the exchange of measurements made by two different machine methods, viz. FMTVDM and QCA, we need to know that the exchange of data between these machine systems represent accurate, consistent and reproducible results.

Prior QCA studies have only looked at the reproducibility of QCA on phantom images and have not closely examined the clinical variability associated with nondiscrete, eccentric lesions occurring in coronary lumens, which are not straight. This study investigates the parameters and variability associated with automated quantitative coronary arteriography and compares percent diameter stenosis with stenosis flow reserve. If we can guarantee the validity of the QCA measurement system, then the proprietary equations so derived and used with FMTVDM, provide a true means for the two machine methods teaching each other, thereby increasing diagnostic and therapeutic accuracy, devoid of human intervention and error.

Methods

Data acquisition and analysis

Data acquisition from diagnostic studies was performed following applicable Institutional Review Board approval and informed consent [3-6]. Acquisition, analysis and consequential data development was done independently and without financial support.

Coronary arteriograms

One thousand and forty (1040) coronary arteries were analyzed using an automated QCA [3-6]. These arteries were analyzed by one of two currently available techniques, which have been previously validated [3,4,7,8,25]. All lesions were analyzed for Stenosis Flow Reserve (SFR), as well as percent reduction of diameter and the other parameters mentioned supra.

Automated Quantitative Coronary Arteriography (QCA)

Two previously validated QCA systems were employed in the analysis of each coronary arteriogram. The first system as previously described [3,4,7,8, 25] obtained images from biplane views using a Philips Poly Diagnost C/Lateral ARC system with pincushion and magnification correction as described by Brown [10]. End-diastolic cine frames were then selected and digitized by a Spatial Data System frame grabber using a 640 by 480 matrix. The image processing (border recognition, magnification correction and stenosis morphology determinations) was carried out on a DEC VAX 11/780 mainframe computer with hardcopy reporting generated on a Textronics 4207 graphics terminal.

The second validated QCA system [9] also utilized end diastolic cine frames using a high resolution (2048 by 3072 pixel) Charged Coupled Device (CCD) to digitize images, which were processed and stored on an Apollo DN 3000 computer workstation.

Statistical Analysis

Percent diameter stenosis (% DS) and SFR were each analyzed for mean, \pm standard deviation and coefficient of variance. SFR was plotted against percent reduction in diameter. Coefficient of variance was plotted against the mean values for % DS and SFR. SFR and % DS were then analyzed for variability and depicted graphically. Using the coefficient of variance for percent diameter reduction (% DS) based upon SFR, the variability of percent diameter reduction was calculated using a three-millimeter example artery.

QCA to FMTVDM Results

Figure 1 shows the relationship between SFR and % DS and Percent Area Stenosis (% AS). Prior publications [8,25] incorrectly defined the relationship between SFR and % DS based upon the dog model. In humans the % AS to SFR model matches the dog % DS to SFR model. It has previously been shown that what clinicians report as % DS, is actually % AS, which matches density data [4,12] and while this can be improved upon with additional training [12], the use of visual interpretation of coronary arteriograms is still flawed and inferior [13-17] to this AI method of QCA-FMTVDM measured CAD.

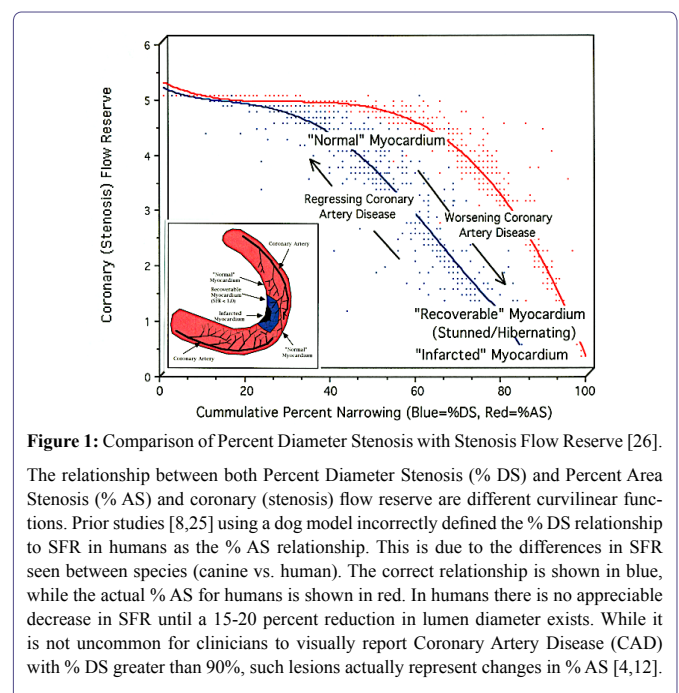


Figure 1: Comparison of Percent Diameter Stenosis with Stenosis Flow Reserve [26].

The relationship between both Percent Diameter Stenosis (% DS) and Percent Area Stenosis (% AS) and coronary (stenosis) flow reserve are different curvilinear functions. Prior studies [8,25] using a dog model incorrectly defined the % DS relationship to SFR in humans as the % AS relationship. This is due to the differences in SFR seen between species (canine vs. human). The correct relationship is shown in blue, while the actual % AS for humans is shown in red. In humans there is no appreciable decrease in SFR until a 15-20 percent reduction in lumen diameter exists. While it is not uncommon for clinicians to visually report Coronary Artery Disease (CAD) with % DS greater than 90%, such lesions actually represent changes in % AS [4,12].

As figure 1 [26] shows, there is no appreciable decrease in stenosis flow reserve until a 15-20 percent reduction in lumen diameter is present. For the most part, SFR remains in the 4 to 5 region until % DS reaches 35 to 40 percent, explaining why there is a delay in angina symptoms in many people whose inflammatory plaques have already impaired arterial function but have not yet impeded resting lumen flow. Consequently, this model explains why so many people experience myocardial infarctions from plaque rupture with no prior anginal warning signs.

FMTVDM can measure these changes in flow reserve by measuring quantitative changes in isotope redistribution unmasking vulnerable plaques through isotope wash-in [18-24]. FMTVDM proprietary

equations using this method provide SFR results obtained using automated QCA as shown in figure 2 [18,26].

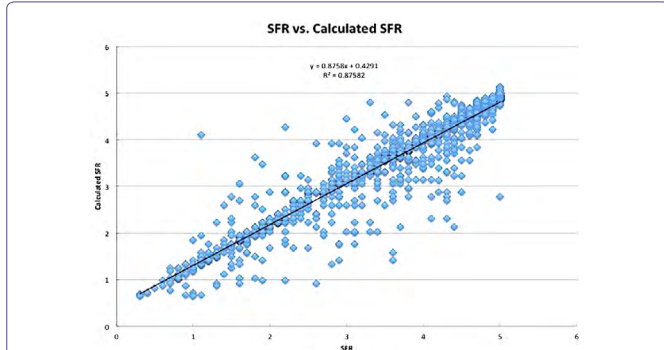


Figure 2: Relationship between QCA derived SFR and the results obtained using FMTVDM (calculated SFR) proprietary equations [18,26].

ML data exchange and enhancement through proprietary equations marks the evolution of AI.

As shown in table 1 and figure 3, there is a curvilinear relationship ($R = 0.98$) between the mean % DS and the mean SFR. Table 2 and figure 4 further reveals how SFR decreases as the %DS increases, without any apparent increase in the standard deviation of stenosis flow reserve measurements. Figure 4 also reveals an almost linear relationship between SFR and %DS once the lumen narrowing exceeds 50 %DS, with critical reductions in SFR seen when %DS exceeds 70 percent.

Discussion

Several investigators have previously raised the issue of what constitutes a significant stenosis and how to determine the normal region of an artery from the abnormal regions given the potential of diffusely diseased vessels. Attempts to visualize the normal region by semi-automated Quantitative Coronary Arteriography (QCA) have been one of several approaches employed to try to reduce the error associated with interpretation of coronary arteriograms.

However, this semi-automated approach is still associated with the need for human intervention, calibration and estimations, including determination of the normal proximal region of the artery in question, the location of vessel walls, and determination of the most stenotic region as well as determination of appropriate biplane images when orthogonal views are used.

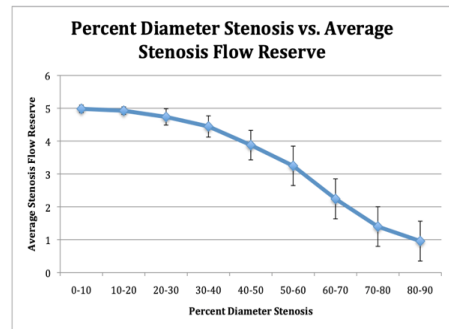


Figure 3: Comparison of average percent diameter stenosis with average stenosis flow reserve.

When the average values of stenosis flow reserve with error bars of one standard deviation is plotted against the average percent diameter stenosis, there is a strong correlation ($R = 0.98$) between the values obtained.

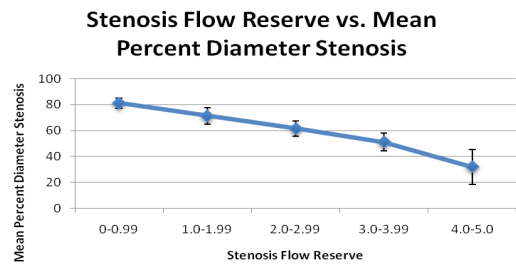


Figure 4: Stenosis flow reserve based upon percent diameter stenosis.

The results of stenosis flow reserve (SFR) and the respective standard deviations are plotted against the percent diameter stenosis (% DS). There is an inverse relationship between SFR and % DS. There is no appreciable change in the range of variance/standard deviation of SFR calculations whether one is looking at a lesion of ten or ninety % DS.

Previously, phantom images with known concentric diameter reductions have been used to examine the reliability of QCA systems and have demonstrated QCA accuracy to within 0.1 millimeter. There are currently no phantoms available with eccentric stenoses and curvatures such as those seen in human coronaries, and the expense of reproducing human coronary arteries from autopsies after previous coronary arteriograms without intervening changes provides not only an economic problem but possibly an ethical one.

Percent Diameter Stenosis	Average Stenosis Flow Reserve	Stenosis Flow Reserve (standard deviation)	Minimum Stenosis Flow Reserve*	Maximum Stenosis Flow Reserve*
0-10	4.982	0.114	4.868	5.096
20-Oct	4.925	0.114	4.811	5.039
20-30	4.736	0.248	4.488	4.984
30-40	4.446	0.323	4.123	4.769
40-50	3.879	0.449	3.43	4.328
50-60	3.247	0.599	2.648	3.846
60-70	2.242	0.609	1.633	2.851
70-80	1.399	0.603	0.796	2.002
80-90	0.958	0.606	0.352	1.564

Table 1: Standard Deviation and Expected Stenosis Flow Reserve Based Upon Percent Diameter Stenosis.

Stenosis Flow Reserve	Mean Percent Diameter Stenosis	Percent Diameter (standard deviation)
0-0.99	81.1	3.7
1.0-1.99	71.4	6.4
2.0-2.99	61.6	5.9
3.0-3.99	51.1	6.8
4.0-5.0	31.9	13.6

Table 2: Variance of percent diameter stenosis based upon percent diameter reduction.

For this reason, the clinical results from these 1040 coronary arteries, which the primary author has previously analyzed provides the data base against which quantitatively conclusions can be drawn with regard to SFR, % DS results and their associated standard deviations. From this, it was possible to provide data, proprietary equations, and a graphic record of the experience to date and its potential use by clinicians.

The theoretical and clinical relationship of SFR to % DS as briefly revealed here shows a curvilinear function where no apparent effect upon stenosis flow reserve until there is at least a 35-40 percent reduction in coronary lumen diameter. This plateaus off at approximately 85-90 % DS. No lesions were quantitatively reported between the range of 91-100 % DS, leading one to suspect that stenoses in this range tend to totally occlude or were not detected on arteriography.

These two variables can also be compared as average values obtained over the stenoses studied, with a strong ($R = 0.98$) linear correlation. This relationship allowed for the development of proprietary equations, which can be used to calculate stenosis flow reserve from percent diameter stenosis, and percent diameter stenosis from stenosis flow reserve, respectively as shown in figure 2.

The development and use of Figure one allows clinicians to estimate the stenosis flow reserve for a given lesion based upon % DS. However, the use of visual estimates of % DS cannot be improved by the simple use of Figure one and likewise, Figure one is only as useful as the accuracy of the method used to determine % DS.

Based upon the results obtained by analyzing this SFR data and comparing it with the FMTVDM data, several points can be made. *First*, a coronary lumen narrowing alone, which has less than a 40 percent reduction in diameter stenosis due to the development of an underlying coronary artery inflammatory plaque [27-32], cannot be appreciably detected using arteriography or QCA analysis. These plaques can be detected using Intravascular Coronary Ultrasound (IVUS) once the clinician knows where to look for them. Such inflammatory plaques are extremely important clinically as they account for the majority of sudden cardiac death seen in individuals with no or few prior anginal symptoms. These plaques are measureable using FMTVDM to unmask the underlying inflammatory plaques and expose their effect upon CFR as detailed elsewhere [1-2,18-24] and provide the necessary information need by the interventional cardiologist.

Second, lesions with a greater than 40 percent reduction in diameter are associated with linearly decreasing SFR. *Third*, while lesions with a greater than 85 % DS have the widest variability in SFR, they all are associated with a SFR of < 1.0 , revealing impaired coronary flow at rest and a further impaired ability to increase coronary blood flow when needed, thus representing significant and potentially life-threatening CAD.

The key to improved diagnostic and therapeutic CAD intervention is contingent upon accuracy. Accuracy is determined by the ability to measure and not qualitatively look for the presence or absence of disease. The human eye and brain is unable to define CAD at the level where coronary artery plaques are impairing coronary artery function. Furthermore, the reliability of qualitative imaging is associated with sensitivity and specificity errors already well established in the medical and lay literature; independent of whether we are talking about coronary arteriography or Myocardial Perfusion Imaging (MPI).

Quantification of coronary arteriography requires QCA and quantification of MPI requires FMTVDM. The development of proprietary equations (FMTVDM) provides the Artificial Intelligence (AI) language for these machines to learn from each other as shown in figure 5. The acquired information from QCA teaches FMTVDM and FMTVDM teaches QCA. The consequential refinement and ML that occurs will further enhance this quantification of CAD both for diagnostic purposes and for modification of treatment based upon measureable treatment outcomes. Systems, which do not directly measure [19-20,22-23,26] cannot provide true AI.

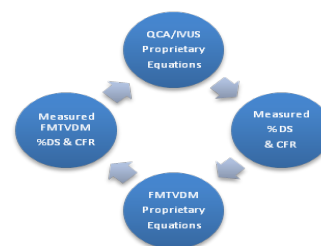


Figure 5: Development of true artificial intelligence through machine learning removing human error from qualitative interpretation of results.

The birth of true AI for diagnosing and treating coronary artery disease.

Through the use of the FMTVDM proprietary equations, QCA and FMTVDM can learn from each other without human intervention, marking the evolution to true AI.

References

- Fleming RM, Fleming MR, Chaudhuri TK (2019) FMTVDM© provides first patented quantitative method to accurately measure both heart disease and breast cancer on the "Health-Spectrum". J Cardiovasc Med Cardiol 6: 19-20.
- Fleming RM, Fleming MR (2019) The Importance of Thinking about and Quantifying Diseases like Cancer and Heart Disease on a "Health-Spectrum" Continuum. J Compr Cancer Rep 3:1-3.
- Fleming RM, Kirkeeide RL, Taegtmeier H, Adyanthaya A, Cassidy DB, et al. (1991) Comparison of technetium-99m tetroxime tomography with automated quantitative coronary arteriography and thallium-201 tomographic imaging. J Am Coll Cardiol 17: 1297-1302.
- Fleming RM, Kirkeeide RL, Smalling RW, Gould KL (1991) Patterns in Visual Interpretation of Coronary Arteriograms as Detected by Quantitative Coronary Arteriography. J Am Coll Cardiol 18: 945-951.
- Fleming RM, Gibbs HR, Swafford J (1992) Using Quantitative Coronary Arteriography to Redefine SPECT Sensitivity and Specificity. Am J Physiol. Imag 7: 59-65.
- Fleming RM, Harrington GM (1994) Quantitative coronary arteriography and its assessment of atherosclerosis. Part II. Calculating stenosis flow reserve from percent diameter stenosis. Angiology 45: 835-840.

7. Kirkeeide RL, Gould KL, Parsel L (1986) Assessment of coronary stenoses by myocardial perfusion imaging during pharmacologic coronary vasodilation. VII. Validation of coronary flow reserve as a single integrated functional measure of stenosis severity reflecting all its geometric dimensions. *J Am Coll Cardiol* 7: 103-113.
8. Demer LL, Gould KL, Goldstein RA, Kirkeeide RL, Mullani NA, et al. (1989) Assessment of Coronary Artery Disease Severity by Positron Emission Tomography Comparison With Quantitative Arteriography in 193 Patients. *Circulation* 79: 825-835.
9. Büchi M, Hess OM, Kirkeeide RL, Suter T, Muser M, et al. (1990) Validation of a New Automatic System for Biplane Quantitative Coronary Arteriography. *Int J Card Imaging* 5: 93-103.
10. Brown BG, Bolton E, Frimer M, Dodge HT (1977) Quantitative coronary arteriography: estimation of dimensions, hemodynamic resistance, and atheroma mass of coronary artery lesions using the arteriogram and digital computation. *Circulation* 55: 329-337.
11. Klocke FJ (1987) Measurements of coronary flow reserve: defining pathophysiology versus making decisions about patient care. *Circulation* 76: 1183-1189.
12. Fleming RM, Fleming DM, Gaede R (1996) Training physicians and health care providers to accurately read coronary arteriograms. A training program. *Angiology* 47: 349-359.
13. Fleming RM (2001) Coronary Artery Disease is More than Just Coronary Lumen Disease. *Amer J Card* 88: 599-600.
14. Marcus ML, Skorton DJ, Johnson MR, Collins SM, Harrison DG, et al. (1988) Visual estimates of percent diameter coronary stenosis: "a battered gold standard". *J Am Coll Cardiol* 11: 882-885.
15. Gould KL (1988) Percent coronary stenosis: battered gold standard, pernicious relic or clinical practicality? *J Am Coll Cardiol* 11: 886-888.
16. Vogel RA (1988) Assessing Stenosis Significance by Coronary Arteriography: are the best variables good enough? *J Am Coll Cardiol* 12: 692-693.
17. Fleming RM (2000) Shortcomings of coronary angiography. *Cleve Clin J Med* 67: 450-451.
18. Fleming RM, Fleming MR, Chaudhuri T, McKusick A, Dooley WC et al. (2018) Both Percent Diameter Stenosis (%DS) and Coronary Flow Reserve (CFR) can be Derived Directly from Myocardial Perfusion Imaging (MPI) using FMTVDM© and Measurement of Isotope Redistribution. *J Nucl Med Radiat Ther* 9: 353.
19. Fleming RM, Fleming MR, Dooley WC, Sheikh A, McKusick A, et al. (2018) FMTVDM - FHRWW & BEST © The First True "Quantitative" Nuclear Imaging Protocols with Proprietary Equations following The Fleming Method (TFM) for Nuclear Scintillation Equipment Quantitative Standardization. *Biomed J Sci & Tech Res* 4:1-4.
20. Fleming RM, Fleming MR, McKusick A, Chaudhuri T (2018) FMTVDM-TFM©: True quantification requires standardization of the tool being used to measure, with a known, unchanging standard to produce accurate, consistent and reproducible quantified measurements. *J Nucl Cardiol* 29923099.
21. Fleming RM, Fleming MR, Harrington G, McKusick A, Chaudhuri T (2018) USVAH Study Demonstrates Statistically Significant Improvement in Diagnosis and Care of U.S Veterans Using FMTVDM - FHRWW© "Quantitative" Nuclear Imaging. The Era of Truly Quantitative Stress-First, Stress-Only Imaging has begun! *J Nucl Med Radiat Ther* 9: 6.
22. Fleming RM, Fleming MR, McKusick A, Chaudhuri TK (2018) Semi-quantification Limitations: FMTVDM© Demonstrates Quantified Tumor Response to Treatment with Both Regional Blood Flow and Metabolic Changes. *J Nucl Med* 59: 1643-1644.
23. Fleming RM, Fleming MR, McKusick A, Chaudhuri TK (2018) FMTVDM© Nuclear Imaging Artificial (AI) Intelligence but First We Need to Clarify the Use Of (1) Stress, (2) Rest, (3) Redistribution and (4) Quantification. *Biomed J Sci & Tech Res* 7:1-4.
24. Fleming RM, Fleming MR, McKusick A, Chaudhuri T (2018) Multi Center Clinical Trial Confirms FMTVDM?? MPI in Seven Modern Clinical Laboratories in the USA and Asia. Artificial Intelligence (AI) with True Quantification. *J Nucl Med Radiat Ther* 9: 372.
25. Ornish D, Brown SE, Scherwitz LW, Billings JH, Armstrong WT, et al. (1990) Can Lifestyle Changes Reverse Coronary Heart Disease? *Lancet* 336: 129-133.
26. Fleming RM, Fleming MR, McKusick A, Chaudhuri TK, Dooley WC, et al. (2018) FMTVDM© Stress-First/Stress-Only Imaging is here! But First We Need to Clarify the Use of What (1) Stress, (2) Rest, (3) Redistribution and (4) Quantification, Really Mean. *J Nucl Med Radiat Ther* 9: 5.
27. Inflammation and Heart Disease; Fleming Unified Theory of Vascular Disease.1-655833842. Started 9-1-2011. Effective 9-16-2011, TX 7-451-244.
28. Stenosis Flow Reserve (SFR), Coronary Flow Reserve (CFR); Quadratic Coronary Flow Reserve (QCFR). 1-655833951. Started 9-1-2011. Effective 9-16-2011, TX 7-451-241.
29. Fleming RM (2000) Atherosclerosis: Understanding the relationship between coronary artery disease and stenosis flow reserve. *Textbook of Angiology* pg no: 381-387.
30. Fleming RM (2000) The Pathogenesis of Vascular Disease. *Textbook of Angiology*. John Pg no: 787-798.
31. Fleming RM (2003) Angina and coronary Ischemia are the result of coronary regional Blood Flow Differences. *J Amer Coll Angiol* 1: 127-142.
32. Fleming RM (2000) The Fleming Unified Theory of Vascular Disease: a link between atherosclerosis, inflammation, and bacterially aggravated atherosclerosis (BAA). *Angiology* 51: 87-89.



Journal of Anesthesia & Clinical Care
Journal of Addiction & Addictive Disorders
Advances in Microbiology Research
Advances in Industrial Biotechnology
Journal of Agronomy & Agricultural Science
Journal of AIDS Clinical Research & STDs
Journal of Alcoholism, Drug Abuse & Substance Dependence
Journal of Allergy Disorders & Therapy
Journal of Alternative, Complementary & Integrative Medicine
Journal of Alzheimer's & Neurodegenerative Diseases
Journal of Angiology & Vascular Surgery
Journal of Animal Research & Veterinary Science
Archives of Zoological Studies
Archives of Urology
Journal of Atmospheric & Earth-Sciences
Journal of Aquaculture & Fisheries
Journal of Biotech Research & Biochemistry
Journal of Brain & Neuroscience Research
Journal of Cancer Biology & Treatment
Journal of Cardiology: Study & Research
Journal of Cell Biology & Cell Metabolism
Journal of Clinical Dermatology & Therapy
Journal of Clinical Immunology & Immunotherapy
Journal of Clinical Studies & Medical Case Reports
Journal of Community Medicine & Public Health Care
Current Trends: Medical & Biological Engineering
Journal of Cytology & Tissue Biology
Journal of Dentistry: Oral Health & Cosmesis
Journal of Diabetes & Metabolic Disorders
Journal of Dairy Research & Technology
Journal of Emergency Medicine Trauma & Surgical Care
Journal of Environmental Science: Current Research
Journal of Food Science & Nutrition
Journal of Forensic, Legal & Investigative Sciences
Journal of Gastroenterology & Hepatology Research
Journal of Gerontology & Geriatric Medicine
Journal of Genetics & Genomic Sciences
Journal of Hematology, Blood Transfusion & Disorders
Journal of Human Endocrinology
Journal of Hospice & Palliative Medical Care
Journal of Internal Medicine & Primary Healthcare
Journal of Infectious & Non Infectious Diseases
Journal of Light & Laser: Current Trends
Journal of Modern Chemical Sciences
Journal of Medicine: Study & Research
Journal of Nanotechnology: Nanomedicine & Nanobiotechnology
Journal of Neonatology & Clinical Pediatrics
Journal of Nephrology & Renal Therapy
Journal of Non Invasive Vascular Investigation
Journal of Nuclear Medicine, Radiology & Radiation Therapy
Journal of Obesity & Weight Loss
Journal of Orthopedic Research & Physiotherapy
Journal of Otolaryngology, Head & Neck Surgery
Journal of Protein Research & Bioinformatics
Journal of Pathology Clinical & Medical Research
Journal of Pharmacology, Pharmaceutics & Pharmacovigilance
Journal of Physical Medicine, Rehabilitation & Disabilities
Journal of Plant Science: Current Research
Journal of Psychiatry, Depression & Anxiety
Journal of Pulmonary Medicine & Respiratory Research
Journal of Practical & Professional Nursing
Journal of Reproductive Medicine, Gynaecology & Obstetrics
Journal of Stem Cells Research, Development & Therapy
Journal of Surgery: Current Trends & Innovations
Journal of Toxicology: Current Research
Journal of Translational Science and Research
Trends in Anatomy & Physiology
Journal of Vaccines Research & Vaccination
Journal of Virology & Antivirals
Archives of Surgery and Surgical Education
Sports Medicine and Injury Care Journal
International Journal of Case Reports and Therapeutic Studies

Submit Your Manuscript: <http://www.heraldopenaccess.us/Online-Submission.php>