

Research Article

Effect of Exogenic H₂O₂ on the Content of Endogenic H₂O₂, the Activity of Catalase, Hydrolases, and on the Ultrastructure of Cells in Tobacco Leaves

Lapshina LA, Reunov AV* and Nagorskaya VP

GB Elyakov Pacific Institute of Bioorganic Chemistry, Far-East Branch of the Russian Academy of Sciences, Prospect 100 let Vladivostoku 159, Vladivostok 690022, Russia

Abstract

This study aimed to examine the influence of exogenic H₂O₂ on the content of endogenic H₂O₂, the activity of catalase, hydrolases (acid phosphatase, protease, RNase) and on the cell ultrastructure in leaves of *Nicotiana tabacum* L. cv. Samsun to characterize the cell reactions and to evaluate their significance in the development of oxidative stress. It was shown that the treatment of the leaves with H₂O₂ at nontoxic concentration (100 mM) substantially increased their content of H₂O₂ and the activity of catalase, as well as activity of the hydrolases, in comparison with untreated leaves. Using ultrastructural analysis, we established that some cells in the treated leaves underwent severe abnormal changes (destruction of tonoplast and plasmalemma, condensation of nuclear chromatin, collapse of cytoplasm, etc.), which may be regarded as a manifestation of Programmed Cell Death (PCD). At the same time, many cells demonstrated signs of organelle activation and did not undergo PCD. It is suggested that cells subjected to H₂O₂-mediated PCD are a source of signal molecules inducing protective mechanisms against oxidative stress in cells not showing signs of PCD. Such mechanisms supposedly are the stimulation of the protein-synthesizing apparatus (nucleolus dimension and amount of both mitochondria and rough endoplasmic reticulum membranes increased) and the lytic compartment (an increase in the activity of hydrolases and enhanced production of dictyosomes, smooth

endoplasmic reticulum elements, and cytoplasmic vacuoles) as well as the proliferation of peroxisomes with crystalloids (known to contain catalase).

Keywords: Acid phosphatase; Catalase; Hydrogen peroxide; *Nicotiana tabacum*; Protease; RNase

Abbreviations

ER: Endoplasmic Reticulum

PCD: Programmed Cell Death

Introduction

Aerobic type cell energetics realizing during respiration and photosynthesis is accompanied by the formation of toxic reactive oxygen species, among which H₂O₂ plays the most important role in the life of a cell. Under normal physiological conditions, H₂O₂ production in cell compartments (peroxisomes, mitochondria, chloroplasts) is controlled by antioxidant enzymes such as catalase and enzymes of ascorbate-glutathione cycle; as a result, a balance between the generation and destruction of H₂O₂ is established. Under conditions of oxidative stress, when cell homeostasis is disturbed, the production of H₂O₂ increases in cell compartments. There is evidence that H₂O₂ acts as a signaling molecule, participating in signaling cascades and inducing the expression of protective genes [1,2]. Comparatively low concentrations of H₂O₂ may lead to the adaptation of plants to stress, while higher ones cause the oxidative damage of proteins and other cellular components (lipids, carbohydrates, DNA) which ends in cell death [2-5].

It was reported that, under oxidative stress, cells have increased proteolytic activity and their oxidatively modified proteins are most effectively split by proteases [6-8]. There are data showing that degradation of the oxidized proteins may be carried out by 20S proteasomes [9] and autophagy [5]. These data may testify to the involvement of the lytic compartment in removing oxidized cellular components and thereby in cell defense against oxidative stress. However, a role for this compartment in the anti-oxidative defense of cells is yet not well understood.

The purpose of this work was to study the influence of the exogenic H₂O₂ on the content of endogenic H₂O₂, catalase and hydrolase (acid phosphatase, protease, RNase) activities as well as on the cell ultrastructure, including the lytic compartment, in healthy leaves of *N. tabacum* L. cv. Samsun.

Materials and Methods

Plant source

Studies were performed on 4-week-old plants of *N. tabacum* L. cv. Samsun grown in pots filled with a mixture of garden soil, peat, and sand (1:1:1) in a glasshouse (28°C/22°C day/night temperature, 16 h photoperiod, 16000 lux, 70% relative humidity). The leaves from the middle plant tier were detached, cut in half along the main vein and dusted with carborundum. The left (test) leaf halves were rubbed with H₂O₂ solution prepared in distilled water, while the right ones (control) were rubbed with distilled water.

*Corresponding author: Reunov AV, GB Elyakov Pacific Institute of Bioorganic Chemistry, Far-East Branch of the Russian Academy of Sciences, Prospect 100 let Vladivostoku 159, Vladivostok, 690022, Russia, Tel: +7 4232318410; Fax: +7 4232314050; E-mail: antreunov@mail.ru

Citation: Lapshina LA, Reunov AV, Nagorskaya VP (2015) Effect of Exogenic H₂O₂ on the Content of Endogenic H₂O₂, the Activity of Catalase, Hydrolases, and on the Ultrastructure of Cells in Tobacco Leaves. J Cell Biol Cell Metab 2: 007.

Received: July 12, 2015; **Accepted:** November 05, 2015; **Published:** November 20, 2015

H₂O₂ was tested in various concentrations: 1.0, 10, 50, 100, 200 and 300 mM. The leaf halves treated with H₂O₂ at concentrations of 1.0-100 mM did not show any toxic symptoms and looked similar to the control leaf halves. High concentrations of H₂O₂ (200, 300 mM) could produce phytotoxic effects. Therefore, in all experiments, the test leaf halves were treated with H₂O₂ at 100 mM concentration. The treated leaves were washed with water and placed in a humid chamber that was then transferred to a constant environment room (24°C, 16 h photoperiod, 16000 lux, 70% relative humidity).

Evaluation of H₂O₂ content in leaves

For assay of H₂O₂ levels in the leaves, we prepared leaf extracts as described previously [10]. All procedures were executed at 0-4°C. Leaves (0.4 g) were homogenized in 1.2 ml 25 mM HCl. The homogenates were filtered through two nylon layers and mixed with 15 mg of charcoal (Sigma-Aldrich, St Louis, USA) for removing of the pigments. The pigment-containing charcoal was separated by centrifugation at 5000 g for 5 min, and the supernatants were clarified by filtration through a 0.22-µm filter unit. The pH of leaf extracts was adjusted to 7.0 with NaOH and these extracts were used to measure the H₂O₂ concentration. The reaction mixture contained 0.9 ml 50 mM Hepes buffer, pH 7.6, 0.1 ml orthophenylenediamine (0.04%), and 0.1 ml of leaf extract. The reaction was started by adding 40 µM horseradish peroxidase. The optical density was measured in a spectrophotometer µQuant (Bio-Tek instruments, Inc., Winooski, VT, USA) at 492 nm. The H₂O₂ concentration was determined from a calibration curve of H₂O₂ (Merck, Darmstadt, Germany) in the range 0.5-80 µM.

Determination of catalase activity in leaves

Catalase activity in the leaves was determined spectrophotometrically by measuring the rate of H₂O₂ disappearance in the enzyme reaction mixture according to Aebi [11]. Leaf tissues (0.1 g) were homogenized on ice in 0.4 ml of the extraction buffer (50 mM phosphate buffer, pH 7.0, and 1% Triton X-100). The homogenates were centrifuged at 12000 g for 20 min at 4°C. Then, 50 µg of the supernatant was added to 0.9 ml of the buffered substrate (50 mM phosphate buffer, pH 7.0, and 20 mM H₂O₂) and the optical absorbance of the mixture was measured at 240 nm.

Determination of hydrolase activities in leaves

The activities of hydrolases (acid phosphatase, proteases, RNases) were determined in crude extracts obtained from 50 leaf disks (4 mm in diameter), as described previously [12] and were expressed in terms of optical density.

Electron microscopy

For electron microscopy, small leaf pieces from the processed leaf halves were fixed first for 3 h in 6,5% glutaraldehyde (Sigma, St Louis, USA) prepared in phosphate buffer (pH 7,4) and then for 2 h in 1% osmium tetroxide. The samples were dehydrated in a graded alcohol and acetone series and embedded in Araldite (Fluka AG, Buchs SG, Switzerland). The leaf sections were cut with a glass knife using a LKB-III (LKB, Bromma, Sweden) ultramicrotome. Three blocks were used for each experimental variant. The sections were mounted on slot grids coated with formvar film stabilized with carbon. Twenty mesophyll cells on sections from each block were examined, i.e., 60 cells were analyzed for each experimental variant. The sections were stained with uranyl acetate and lead citrate and were examined

with a LIBRA-120 electron microscope (Carl Zeiss, Jena, Germany). Morphometric analysis was performed according to Weibel [13].

Statistical analysis of the results

The results of the experiments were analysed statistically using Student's t-test.

Results

Treatment of tobacco leaves with 100 mM H₂O₂ increased the content of endogenic H₂O₂ in them. The highest excess of H₂O₂ levels (by 59.4 %) in the treated leaves in comparison with untreated leaves was registered on the 3rd day of the experiment (Table 1). Catalase activity in H₂O₂-treated leaves increased in comparison with control during 3 days from 39.6 to 71.9 % (Table 2).

Number of days after treatment with H ₂ O ₂	H ₂ O ₂ content, µM	
	Treatment with H ₂ O ₂	Control
1	17.2 ± 1.9	11.9 ± 1.2
2	20.1 ± 2.2	13.7 ± 1.4
3	26.3 ± 2.9	16.5 ± 1.9

Table 1: Influence of H₂O₂ on the content of endogenic H₂O₂ in tobacco leaves.

Every value is the average of ten replicates (± standard error). The differences are statistically significant relative to controls at P<0.05.

Number of days after treatment with H ₂ O ₂	Treatment with H ₂ O ₂	Control
	1	0.40 ± 0.04*
2	0.42 ± 0.04**	0.26 ± 0.03
3	0.45 ± 0.05**	0.27 ± 0.03

Table 2: Influence of H₂O₂ on the catalase activity in tobacco leaves.

Catalase activity in leaves is expressed in terms of optical density. Every value is the average of ten replicates (± standard error). The differences are statistically significant relative to controls at *P<0.05 and **P<0.01.

H₂O₂-treatment had a marked influence on the leaf activity of hydrolases. One day after treatment, the level of acid phosphatase in the test leaves substantially increased (by 45.7 %) in comparison with untreated leaves and remained enhanced for 3 days (Table 3). Protease activity in test samples increased compared to the control during 3 days, from 53.3 to 80 % (Table 3). RNase activity in the leaves

Hydrolases	Number of days after treatment	Hydrolase activity	
		Treatment with H ₂ O ₂	Control
Acid phosphatase	1	0.51 ± 0.05*	0.35 ± 0.04
	2	0.55 ± 0.06*	0.39 ± 0.04
	3	0.54 ± 0.06*	0.37 ± 0.04
Protease	1	0.23 ± 0.03*	0.15 ± 0.02
	2	0.31 ± 0.03**	0.20 ± 0.02
	3	0.45 ± 0.05**	0.25 ± 0.03
RNase	1	0.49 ± 0.05**	0.29 ± 0.03
	2	0.53 ± 0.05*	0.36 ± 0.04
	3	0.59 ± 0.06*	0.40 ± 0.05

Table 3: Influence of H₂O₂ on the hydrolase activity in tobacco leaves.

Activities of hydrolases in leaves are expressed in terms of optical density. Every value is the average of ten replicates (± standard error). The differences are statistically significant relative to controls at *P<0.05 and **P<0.01.

one day after H₂O₂-treatment considerably increased (by 68.9%) in comparison with the control and then gradually declined (Table 3).

Ultrastructural studies showed that basic organelles of mesophyll cells in leaves kept for 3 days in a humid chamber usually retained the typical structure. Nuclear chromatin was presented as loose clumps spread in the light nucleoplasm (Figure 1a). Nucleoli were relatively small (Figure 1a). Mitochondria contained a small number of cristae merged into a moderately dense matrix (Figure 1b). Chloroplasts had a rather developed system of photosynthetic membranes (Figure 1b). Cisternae of rough (Figure 1c) and smooth (Figure 1d) Endoplasmic Reticulum (ER), dictyosomes (Figure 1e), peroxisomes (Figure 1d), and cytoplasmic vacuoles (Figure 1c) were found in a comparatively small number.

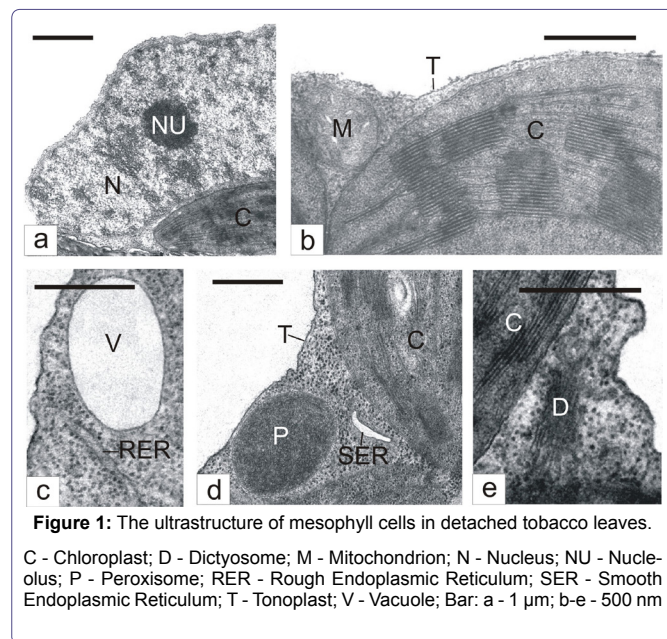


Figure 1: The ultrastructure of mesophyll cells in detached tobacco leaves.

C - Chloroplast; D - Dictyosome; M - Mitochondrion; N - Nucleus; NU - Nucleolus; P - Peroxisome; RER - Rough Endoplasmic Reticulum; SER - Smooth Endoplasmic Reticulum; T - Tonoplast; V - Vacuole; Bar: a - 1 μ m; b-e - 500 nm

Some mesophyll cells in H₂O₂-treated leaves demonstrated evident features of destruction. The tonoplast in them was not infrequently ruptured, cytoplasmic areas lost ribosomes and became electron-transparent (Figure 2a). Usually, in such areas, we observed lysing membrane structures (Figure 2a). Envelopes of nuclei, mitochondria (Figure 2a) and chloroplasts (Figure 2b) were disturbed. Often, nuclear chromatin became electron dense and condensed (Figure 2c). Chloroplasts demonstrated the sticking of thylakoids and grana transformation into dense amorphous formations (Figure 2b). Mitochondria might lose cristae and became electron-transparent in appearance (Figure 2d). Sometimes, areas of collapsed cytoplasm with destroyed organelles were seen (Figure 2d). The cell periphery frequently had electron-transparent areas with degenerating membrane structures (Figure 2b). In such areas, plasmatic membrane might undergo destruction (Figure 2b).

At the same time, many mesophyll cells of H₂O₂-treated leaves underwent changes that pointed to organelle activation. Nucleoli (Figure 3a) in such cells were larger than in cells of untreated leaves. The number of mitochondria and the cristae in them (Figure 3b) notably increased. The amount of dictyosomes (Figure 3c), the rough (Figure 3b) and smooth (Figure 3a) ER membranes, and cytoplasmic vacuoles (Figure 3d) were also enhanced. ER smooth elements on sections usually appeared swollen (Figure 3a). A characteristic of the cells was production of microbodies with crystalloids

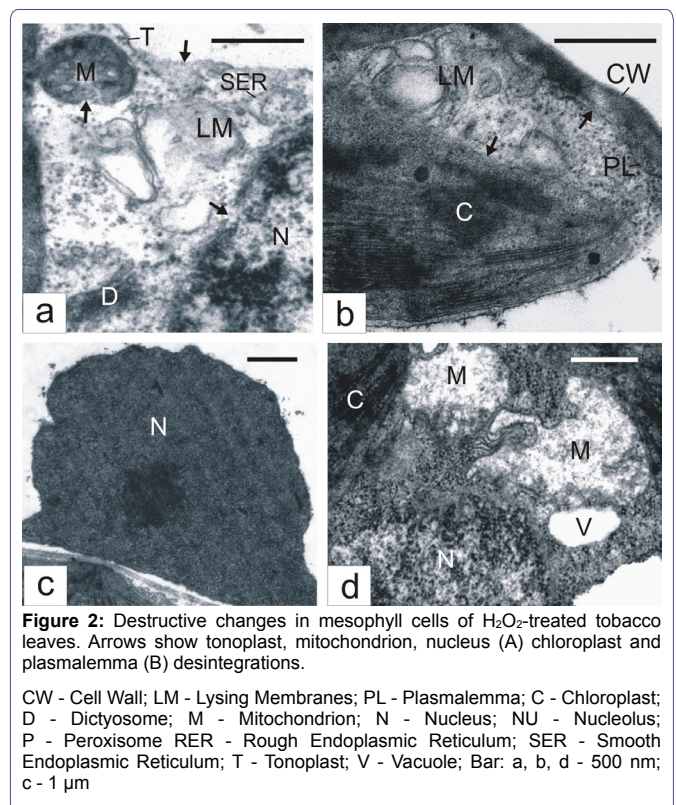


Figure 2: Destructive changes in mesophyll cells of H₂O₂-treated tobacco leaves. Arrows show tonoplast, mitochondrion, nucleus (A) chloroplast and plasmalemma (B) desintegrations.

CW - Cell Wall; LM - Lysing Membranes; PL - Plasmalemma; C - Chloroplast; D - Dictyosome; M - Mitochondrion; N - Nucleus; NU - Nucleolus; P - Peroxisome; RER - Rough Endoplasmic Reticulum; SER - Smooth Endoplasmic Reticulum; T - Tonoplast; V - Vacuole; Bar: a, b, d - 500 nm; c - 1 μ m

(Figure 3e). Ultrastructure-morphometric analysis showed that the action of exogenic H₂O₂ causes an increase in such cells, in comparison with control, of nucleolar volume density, amount and volume density of mitochondria, peroxisomes with crystalloids, and vacuoles, as well as of the surface area of rough and smooth ER membranes and dictyosomes (Table 4).

Discussion

In the present study, we indicated that the treatment of leaves of *N. tabacum* with H₂O₂ increases the content of endogenic H₂O₂ and catalase activity in them compared to those in untreated leaves. These results support the data obtained recently by Yang et al., [14]. Increased catalase activity in parallel with the accumulation of endogenic H₂O₂ in the leaves, in accordance with existing representations [1], may testify to a signaling role of H₂O₂ in the induction of catalase.

Our ultrastructure assays showed that the treatment of tobacco leaves with H₂O₂ causes various modifications in mesophyll cells. Some cells in the treated leaves demonstrated severe abnormal changes (destruction of tonoplast and plasmalemma, condensation of nuclear chromatin, collapse of cytoplasm, etc.), which may be regarded as a manifestation of PCD [15].

At the same time, the ultrastructure-morphometric analysis showed that treatment of the leaves with H₂O₂ causes activation of different organelles in many cells, which is manifested in an increase of the corresponding morphometric parameters. In such cells, we found increased nucleoli size, as well as enhanced amount of mitochondria and rough ER membranes in particular. These changes in cell structure point to the stimulation of the protein-synthesizing apparatus, which enhances cell possibilities for defensive responses to unfavourable factors [16]. In addition, H₂O₂-treatment activated the lytic compartment that is expressed, in particular, in stimulation of

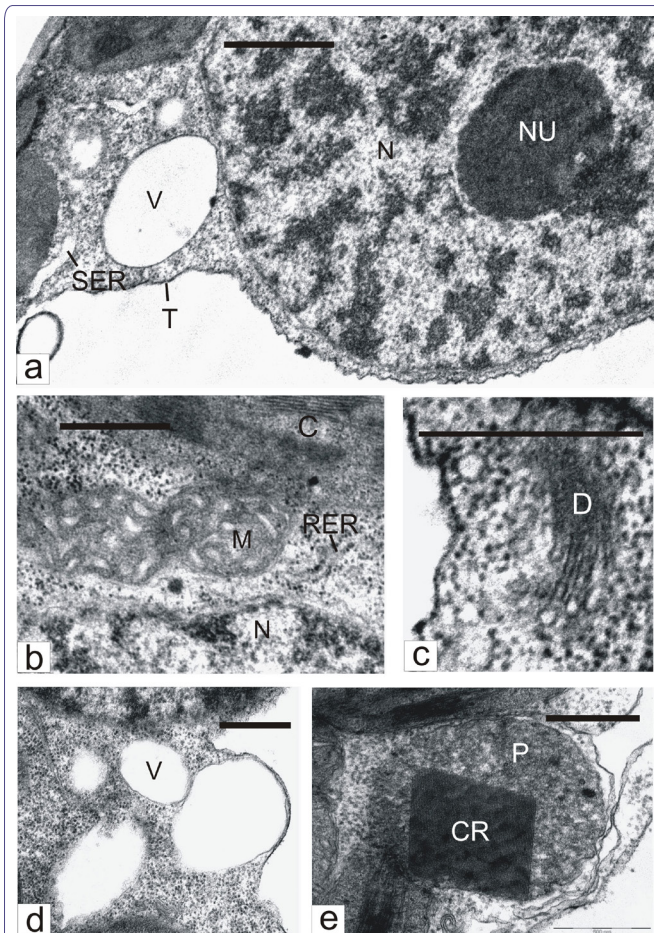


Figure 3: Parts of mesophyll cells in H₂O₂-treated tobacco leaves.

CR - Crystalloid; C - Chloroplast; D - Dictyosome; M - Mitochondrion; N - Nucleus; NU - Nucleolus; P - Peroxisome; RER - Rough Endoplasmic Reticulum; SER - Smooth Endoplasmic Reticulum; T - Tonoplast; V - Vacuole; Bar: a - 1 μm; b-e - 500 nm

Parameter	Treatment with H ₂ O ₂	Control
Volume nucleolar density, % to nucleus volume	0.16 ± 0.02**	0.1 ± 0.01
Volume density of mitochondria, % to cell volume	2.4 ± 0.30*	1.6 ± 0.20
Number of mitochondria in 100 μm ³	2.8 ± 0.30**	1.7 ± 0.20
Surface area of rough ER membranes in 1 μm ³ , μm ²	0.34 ± 0.04*	0.23 ± 0.03
Surface area of smooth ER membranes in 1 μm ³ , μm ²	0.24 ± 0.03*	0.15 ± 0.02
Surface area of dictyosome membranes in 1 μm ³ , μm ²	0.15 ± 0.02**	0.09 ± 0.01
Volume density of peroxisomes with crystalloids, % to cell volume	0.28 ± 0.03**	0.17 ± 0.02
Number of peroxisomes with crystalloids in 100 μm ³	0.37 ± 0.04**	0.22 ± 0.03
Volume density of vacuoles, % to cell volume	2.2 ± 0.30*	1.4 ± 0.20
Number of vacuoles in 100 μm ³	2.9 ± 0.3**	1.9 ± 0.20

Table 4: Influence of H₂O₂ on some morphometric parameters of mesophyll cells in tobacco leaves.

Each value is the average of 60 cells. The differences are statistically significant relative to controls at *P<0.05 and **P<0.01.

the production of dictyosomes, smooth ER elements and cytoplasmic vacuoles, which, as previously reported [17,18], are prominent constituents of this compartment. The observed swelling of cisternae of the smooth ER is probably caused by abnormal changes in the reticular membranes and, as a consequence, via the disturbance of their barrier properties. Such changes in ER can lead to a release of hydrolases from the reticular cavity into the cytoplasm [16]. The hydrolases released from the ER cisternae seem to cause the development of lytic processes, resulting in the degradation of tonoplasts, organelles, and in the formation of electron-light cytoplasmic areas with lysing material in them.

Ultrastructural examinations testifying to the activation of the lytic compartment and lytic processes in cells of H₂O₂-treated leaves are supported by our biochemical data on the H₂O₂-mediated increase in the activity of hydrolases (acid phosphatase, RNAase, proteases) in leaves.

The observed variety of structural modifications of cells in H₂O₂-treated leaves is probably conditioned by different intracellular concentrations of the agent accumulated during leaf treatment.

We suppose that high concentrations of intracellular H₂O₂ led to oxidative damage of proteins and other cellular components which resulted in cell death. It is known that PCD in plants is caused by the activation of cysteine proteases, which are similar to animal caspases [19,20]. According to some data [21-23] an important role in the induction of plant PCD is played by caspase-like vacuolar processing enzymes. There is evidence that PCD in plants can be mediated not only by caspase-like proteases, but also by other proteolytic enzymes [24,25]. Thus, H₂O₂-induced protease activation in tobacco leaves revealed here is in line with ultrastructural PCD features observed in some cells.

The cells that have taken comparatively low amount of the agent or have not taken it at all, during leaf rubbing with H₂O₂, are apparently capable of resisting oxidative stress and, therefore, do not undergo PCD. There is evidence that H₂O₂ can be involved in initiating cell death-protective responses in the neighboring cells that surround the sites of the hypersensitive response to pathogens and triggers systemic acquired resistance in distant tissues [26,27]. It was reported [28] that H₂O₂ may function as a diffusible signal for the induction in adjacent cells of genes encoding cellular protectants. We think that cells subjected to H₂O₂-mediated PCD are a source of signal molecules inducing protective mechanisms against oxidative stress in cells not showing signs of PCD. It seems that one of such mechanisms is the activation of the lytic compartment and lytic processes. Such representation is in accordance with data [5] suggesting that the cellular defense against oxidative stress requires the removal of oxidatively modified cell proteins by degradative process. Another possible cell death-protective mechanism is the proliferation of peroxisomes with crystalloid inclusions, which correlates with the enhanced catalase activity in H₂O₂-treated leaves. It is known [29] that such inclusions are composed of metabolically active catalase, which is able to destroy toxic H₂O₂. Thereby, the production of crystalloid-containing peroxisomes in cells probably means that such peroxisomes may limit the redundant accumulation of intracellular H₂O₂, preventing membrane lipid peroxidation and PCD development.

Conclusion

The treatment of the tobacco leaves with H₂O₂ at nontoxic concentration (100 mM) substantially increases their content of H₂O₂

and the activity of catalase, as well as of the hydrolases (acid phosphatase, protease, RNase) in comparison with untreated leaves. Ultrastructural analysis showed that such treatment causes various modifications in cells. Some cells in the H₂O₂-treated leaves undergo severe abnormal changes (destruction of tonoplast and plasmalemma, condensation of nuclear chromatin, collapse of cytoplasm, etc.), which may be regarded as a manifestation of PCD. At the same time, many cells demonstrate signs of organelle activation and do not undergo PCD. The observed differences in H₂O₂-induced structural modifications of cells seem to be conditioned by different intracellular concentrations of the agent accumulated during leaf treatment. High concentrations of H₂O₂ apparently cause oxidative damage of the cells which results in cell death. The cells that have taken comparatively low amount of the agent or have not taken it at all, are probably able of resisting oxidative stress and do not undergo PCD. We suggest that cells subjected to H₂O₂-mediated PCD are a source of signal molecules inducing protective mechanisms against oxidative stress in cells not showing signs of PCD. It may be concluded that such mechanisms are the stimulation of the protein-synthesizing apparatus (nucleolus dimension and amount of both mitochondria and rough ER membranes increased) and the lytic compartment (an increase in the activity of hydrolases and enhanced production of dictyosomes, smooth ER elements, and cytoplasmic vacuoles) as well as the proliferation of peroxisomes with crystalloids (known to contain catalase).

References

1. Gechev TS, Hille J (2005) Hydrogen peroxide as a signal controlling plant programmed cell death. *J Cell Biol* 168: 17-20.
2. Nyathi Y, Baker A (2006) Plant peroxisomes as a source of signalling molecules. *Biochim Biophys Acta* 1763: 1478-1495.
3. Mittler R (2002) Oxidative stress, antioxidants and stress tolerance. *Trends Plant Sci* 7: 405-410.
4. Apel K, Hirt H (2004) Reactive oxygen species: metabolism, oxidative stress, and signal transduction. *Annu Rev Plant Biol* 55: 373-399.
5. Xiong Y, Contento AL, Nguyen PQ, Bassham DC (2007) Degradation of oxidized proteins by autophagy during oxidative stress in *Arabidopsis*. *Plant Physiol* 143: 291-299.
6. Grune T, Reinheckel T, Davies KJ (1997) Degradation of oxidized proteins in mammalian cells. *FASEB J* 11: 526-534.
7. Palma JM, Sandalio LM, Corpas FJ, Romero-Puertas MC, McCarthy I, et al. (2002) Plant proteases, protein degradation, and oxidative stress: role of peroxisomes. *Plant Physiology and Biochemistry* 40: 521-530.
8. Romero-Puertas MC, Palma JM, Gómez M, del Río LA, Sandalio LM (2002) Cadmium causes the oxidative modification of proteins in pea plants. *Plant, Cell & Environment* 25: 677-686.
9. Basset G, Raymond P, Malek L, Brouquisse R (2002) Changes in the expression and the enzymic properties of the 20S proteasome in sugar-starved maize roots. evidence for an *in vivo* oxidation of the proteasome. *Plant Physiol* 128: 1149-1162.
10. Vanacker H, Sandalio L, Jiménez A, Palma JM, Corpas FJ, et al. (2006) Roles for redox regulation in leaf senescence of pea plants grown on different sources of nitrogen nutrition. *J Exp Bot* 57: 1735-1745.
11. Aebi H (1984) Catalase *in vitro*. *Methods Enzymol* 105: 121-126.
12. Lapshina LA, Nagorskaya VP, Reunov AV, Barabanova AO, Shevchenko NM, et al. (2011) Correlation between influence of polysaccharides on hydrolase activity and their antiviral effect in tobacco leaves. *Biochemistry (Mosc)* 76: 462-466.
13. Weibel ER (1969) Stereological principles for morphometry in electron microscopic cytology. *Int Rev Cytol* 26: 235-302.
14. Yang YL, Zhang YY, Lu J, Zhang H, Liu Y, et al. (2012) Exogenous H₂O₂ increased catalase and peroxidase activities and proline content in *Nitraria tangutorum* callus. *Biol Plant* 44: 330-336.
15. Lam E (2004) Controlled cell death, plant survival and development. *Nat Rev Mol Cell Biol* 5: 305-315.
16. Lapshina LA, Reunov AV, Nagorskaya VP, Zviagintseva TN, Shevchenko NM (2009) [Effect of fucoidan on the ultrastructure of mesophyll cells of *Datura stramonium* L. and accumulation of potato virus X in them]. *Tsitologiya* 51: 484-489.
17. Matile P (1975) The lytic compartment of plant cells. Springer-Verlag Wien, Austria.
18. Marty F (1999) Plant vacuoles. *Plant Cell* 11: 587-600.
19. del Pozo O, Lam E (1998) Caspases and programmed cell death in the hypersensitive response of plants to pathogens. *Curr Biol* 8: 1129-1132.
20. Chichkova NV, Kim SH, Titova ES, Kalkum M, Morozov VS, et al. (2004) A plant caspase-like protease activated during the hypersensitive response. *Plant Cell* 16: 157-171.
21. Hatsugai N, Kuroyanagi M, Yamada K, Meshi T, Tsuda S, et al. (2004) A plant vacuolar protease, VPE, mediates virus-induced hypersensitive cell death. *Science* 305: 855-858.
22. Rojo E, Martín R, Carter C, Zouhar J, Pan S, et al. (2004) VPEgamma exhibits a caspase-like activity that contributes to defense against pathogens. *Curr Biol* 14: 1897-1906.
23. Misas-Villamil JC, Toenges G, Kolodziejek I, Sadaghiani AM, Kaschani F, et al. (2013) Activity profiling of vacuolar processing enzymes reveals a role for VPE during oomycete infection. *Plant J* 73: 689-700.
24. Beers EP, Woffenden BJ, Zhao C (2000) Plant proteolytic enzymes: possible roles during programmed cell death. *Plant Mol Biol* 44: 399-415.
25. He X, Kermod AR (2003) Proteases associated with programmed cell death of megagametophyte cells after germination of white spruce (*Picea glauca*) seeds. *Plant Mol Biol* 52: 729-744.
26. Alvarez ME, Pennell RI, Meijer PJ, Ishikawa A, Dixon RA, et al. (1998) Reactive oxygen intermediates mediate a systemic signal network in the establishment of plant immunity. *Cell* 92: 773-784.
27. Torres MA, Jones JD, Dangl JL (2005) Pathogen-induced, NADPH oxidase-derived reactive oxygen intermediates suppress spread of cell death in *Arabidopsis thaliana*. *Nat Genet* 37: 1130-1134.
28. Levine A, Tenhaken R, Dixon R, Lamb C (1994) H₂O₂ from the oxidative burst orchestrates the plant hypersensitive disease resistance response. *Cell* 79: 583-593.
29. Tenberge KB, Ruhoff C, Heinze M, Eising R (1997) Purification and immunoelectron microscopic characterization of crystalline inclusions from plant peroxisomes. *Protoplasma* 196: 142-154.